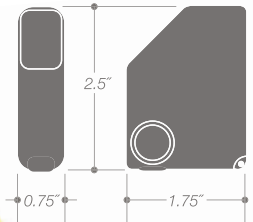
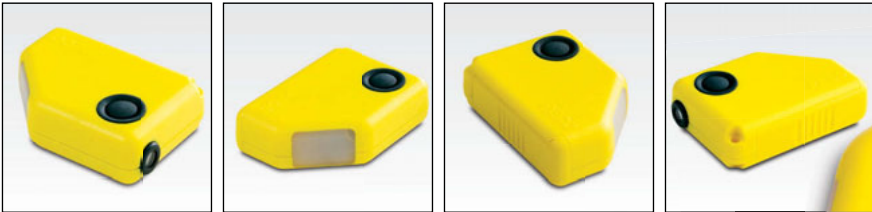




Peco DCC-1 Digital Compass/Clinometer



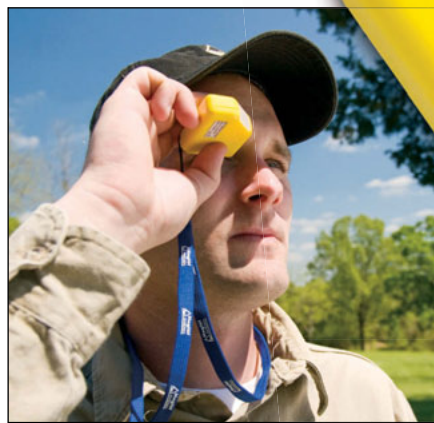
The compact size and durable construction of the DCC-1 makes it able to withstand the rigors of everyday use. Ease of use, greater accuracy than conventional analog clinometers and dramatically reduced cost of ownership over the life of the instrument make the DCC-1 the best value.



DCC-1 shown actual size

Taking a new angle on clinometers.

The exclusive Peco DCC-1 is first digital combination compass/clinometer available!



Able to withstand the rigors of everyday use, the DCC-1 can take a real licking, unlike conventional models. There are no capsules to break or leak, meaning fewer costly repairs and more uptime. Plus, every DCC-1 is covered by a One-Year Limited Warranty.



This small, lightweight instrument fits easily into a pocket, but is as dependable and rugged as conventional models. Simple push-button operation and an intuitive interface that's easy to both learn and read makes the DCC-1 the hands-down choice for any application. And since there are no capsules that can freeze, crack or require maintenance, the DCC-1 is less expensive over the life of the instrument.

With features that outperform

conventional analog models, the DCC-1 is sure to become the instrument of choice for communications specialists and installers across north America.

As a combination tool that can replace aging and damaged models, the DCC-1 features an azimuth compass (0-360°) graduated in 1° increments, and is accurate to 2.5°. The clinometer measures -90° to +90° and is graduated in 0.1° increments with accuracy to 0.2°. Single-button operation guides users

through multiple functions and readings, and users can switch from compass to clinometer with just one push.

The backlit easy-to-read LCD display provides large, legible numbers, even in low-light conditions, reducing errors. Built-in magnetic declination and easy calibration. Operates on a single 1.5V AA battery. Manufactured in Sweden to stringent quality standards. Lanyard and neoprene case included.

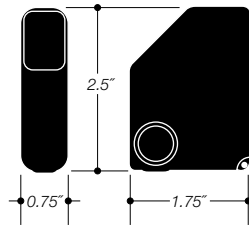
PECO DCC-1

7168

The exclusive PECO DCC-1 is first digital combination compass/clinometer available on the market.

This small, lightweight instrument fits easily into a pocket, but is as dependable and rugged as conventional models. Simple push-button operation and an intuitive interface that's easy to both learn and read makes the DCC-1 the hands-down choice for any application. And since there are no capsules that can freeze, crack or require maintenance, the DCC-1 is less expensive over the life of the instrument.

Dimensions



Features

Compass (0-360°) is graduated in 1° increments, and is accurate to 2.5°; clinometer (-90° / +90°) is graduated in 0.1° increments, and is accurate to 0.2°. One-button operation guides users through multiple functions and readings. Users can switch from Azimuth to vertical angle measurements with just one push.

Backlit easy-to-read LCD display provides large, legible numbers, even in low-light conditions, reducing errors. Built-in magnetic declination and easy calibration. Operates on one 1.5V AA battery. Manufactured in Sweden to stringent quality standards. Lanyard and neoprene case included. One year limited warranty.

31165 DCC-1 Digital Compass/
Clinometer

Non-magnetic high-impact ABS plastic housing is durable and water resistant. Yellow color is easy to spot if misplaced or dropped in the field.

Lanyard attachment (lanyard included).

Translucent display backlight window.

Single push-button operation provides access to all functions. Internal LCD display indicates current mode, function and reading.

Sighting window.



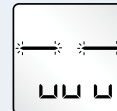
Instrument in Compass mode (C°)



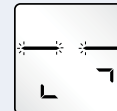
Current bearing displayed



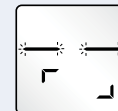
Tilt indicator directs to point instrument UP to obtain level.



Tilt indicator directs to point instrument DOWN to obtain level.



Tilt indicator directs to adjust instrument CLOCKWISE to obtain level.



Tilt indicator directs to point instrument COUNTER CLOCKWISE to obtain level.



Instrument in Clinometer mode (Ang)



Current angle displayed