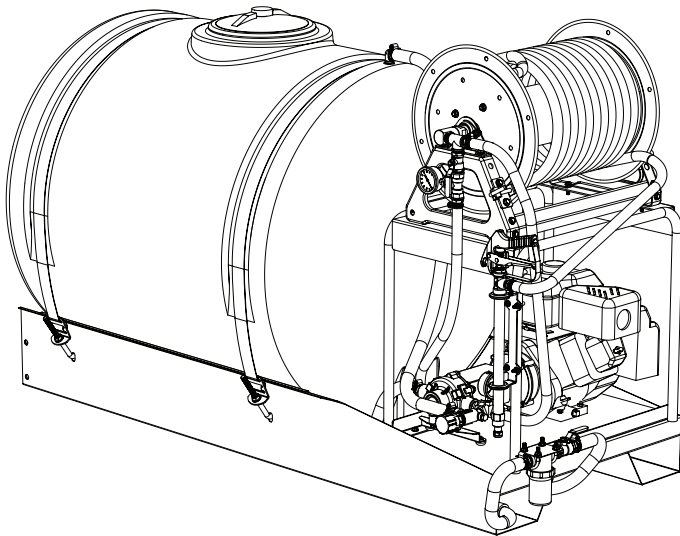


**5300467**  
**MODEL: LSS-280**  
**200 GALLON SKID SPRAYER**

**ASSEMBLY / OPERATION INSTRUCTIONS / PARTS**



**BEFORE RETURNING THIS PRODUCT  
FOR ANY REASON, PLEASE CALL  
1-800-831-0027**

**IF YOU SHOULD HAVE A QUESTION OR  
EXPERIENCE A PROBLEM WITH YOUR  
FIMCO INDUSTRIES PRODUCT:  
1-800-831-0027**

**BEFORE YOU CALL, PLEASE HAVE THE  
FOLLOWING INFORMATION AVAILABLE:  
SALES RECEIPT & MODEL NUMBER. IN MOST  
CASES, A FIMCO INDUSTRIES EMPLOYEE CAN  
RESOLVE THE PROBLEM OVER THE PHONE.**

**GENERAL INFORMATION**

The purpose of this manual is to assist you in operating and maintaining your skid sprayer. Please read it carefully as it furnishes information which will help you achieve years of dependable trouble free operation.

**STOP WARNING STOP**

**DO NOT USE PUMP IN AN EXPLOSIVE  
ENVIRONMENT. DO NOT USE TO PUMP  
FLAMMABLE FLUIDS, GASOLINE,  
KEROSENE FUEL, OIL, ETC.**

**WARRANTY / PARTS / SERVICE**

Products are warranted for one year from date of purchase against manufacturer or workmanship defects.

Your authorized dealer is the best source of replacement parts and service. To obtain prompt, efficient service, always remember to give the following information:

1. Correct part description and part number.
2. Model number of your sprayer.
3. Serial number of your sprayer.

Part description and part numbers can be obtained from the illustrated parts list section of this manual.

Whenever you need parts or repair service, contact your distributor/dealer first. For warranty work always take your original sales slip, or other evidence of purchase date, to your distributor/dealer.

**TECHNICAL SPECIFICATIONS**

- 5.5 Horsepower Recoil Start Engine
- 8 Roller Cast Iron Pump
- 10 Gallons Per Minute at 250 PSI
- Pressure Gauge-Adjustable Pressure Range
- Suction Line Filter
- Handgun-300' Handgun 1/2" Hose
- Dual Jet Agitation

**OPERATION**

Add gas and oil to the engine as specified in the engine manual. Check the side port of the engine gear case for lubricant. Add more lubricant if necessary. See the engine manual for type of lubricant needed.

It is important to test the sprayer with plain water before attempting actual spraying. This will enable you to check the completed sprayer for leaks in the plumbing system.

1. Open tank lid and be sure the tank is clean and free of foreign material. Fill the tank about one half full with plain water.
2. Open the valve in the strainer assembly and allow water to flow to the pump. (The valve is located at this point to enable the strainer to be taken apart for cleaning.)



[WWW.FIMCOINDUSTRIES.COM](http://WWW.FIMCOINDUSTRIES.COM)

1000 FIMCO LANE • P.O. BOX 1700 • NO. SIOUX CITY, SD 57049  
TOLL FREE: 800-831-0027 • TOLL FREE FAX: 800-494-0440  
Form No. 356 (5004293 4/07) Printed In U.S.A.

**CAUTION:** Always be sure that water has reached the roller pump before starting your sprayer. If the pump is run dry, serious damage to the pump will result.

3. It is always best to start the sprayer at little or no pressure. This sprayer is equipped with a spring loaded relief valve. Turn the valve handle out to decrease pressure and in for increased pressure. The location of the relief valve and other important components may be found by referring to the exploded view drawings.

4. The pumping system includes dual agitators which will help keep the solution in suspension. Pressure to the agitator should never exceed 100 PSI. When spraying at pressures over 100 PSI, use the brass valve (in the hose reel/agitator plumbing assembly) to throttle the pressure to the agitator by closing the valve.

As solution is forced through the agitator, the venturi action triples the flow through the agitator.

The valve in the line may shut off the agitation completely when not needed, or it can throttle the amount of solution going to the agitator if too much agitation occurs.

5. You may now start the sprayer engine following the engine manufacturers instructions. Let the sprayer run at low

pressure until water has reached the handgun, and all air has been purged from the handgun line.

6. The pressure should now be increased to 30-40 PSI. Operate the sprayer at this increased pressure for 3-5 minutes, thoroughly testing the unit before adding chemicals.

7. The sprayer should now be ready for adding chemicals.

### AFTER SPRAYING





After use fill the sprayer part way with water, start the sprayer and allow clear water to be pumped through the plumbing system and out through the spray nozzles. Use the handgun on the sprayer to thoroughly wash all internal parts of tank and tank cover.

Refill the tank about half full with plain water and use a chemical neutralizer such as NUTRA-SOL or equivalent and repeat cleaning instructions above. Flush the entire sprayer with neutralizing agent. Follow the chemical manufacturers disposal instructions of all wash or rinsing water.

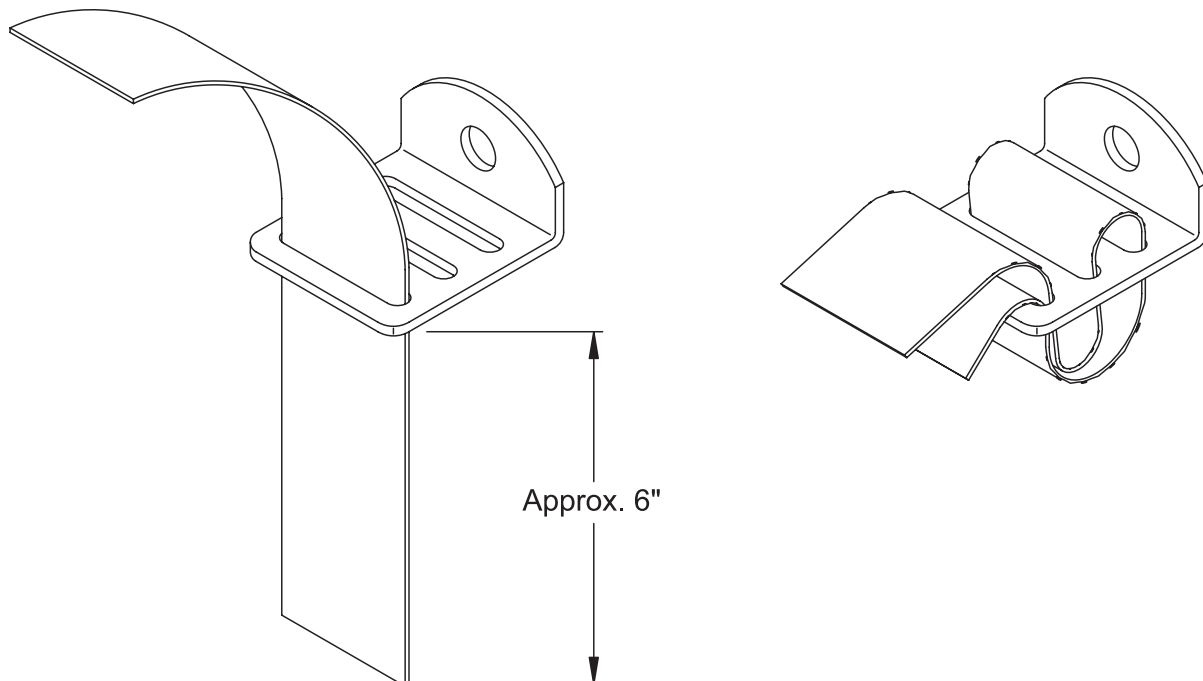
### WINTER STORAGE

Drain all water out of sprayer paying special attention to pump, valves, and handgun. These items are especially prone to damage from chemicals and freezing weather.

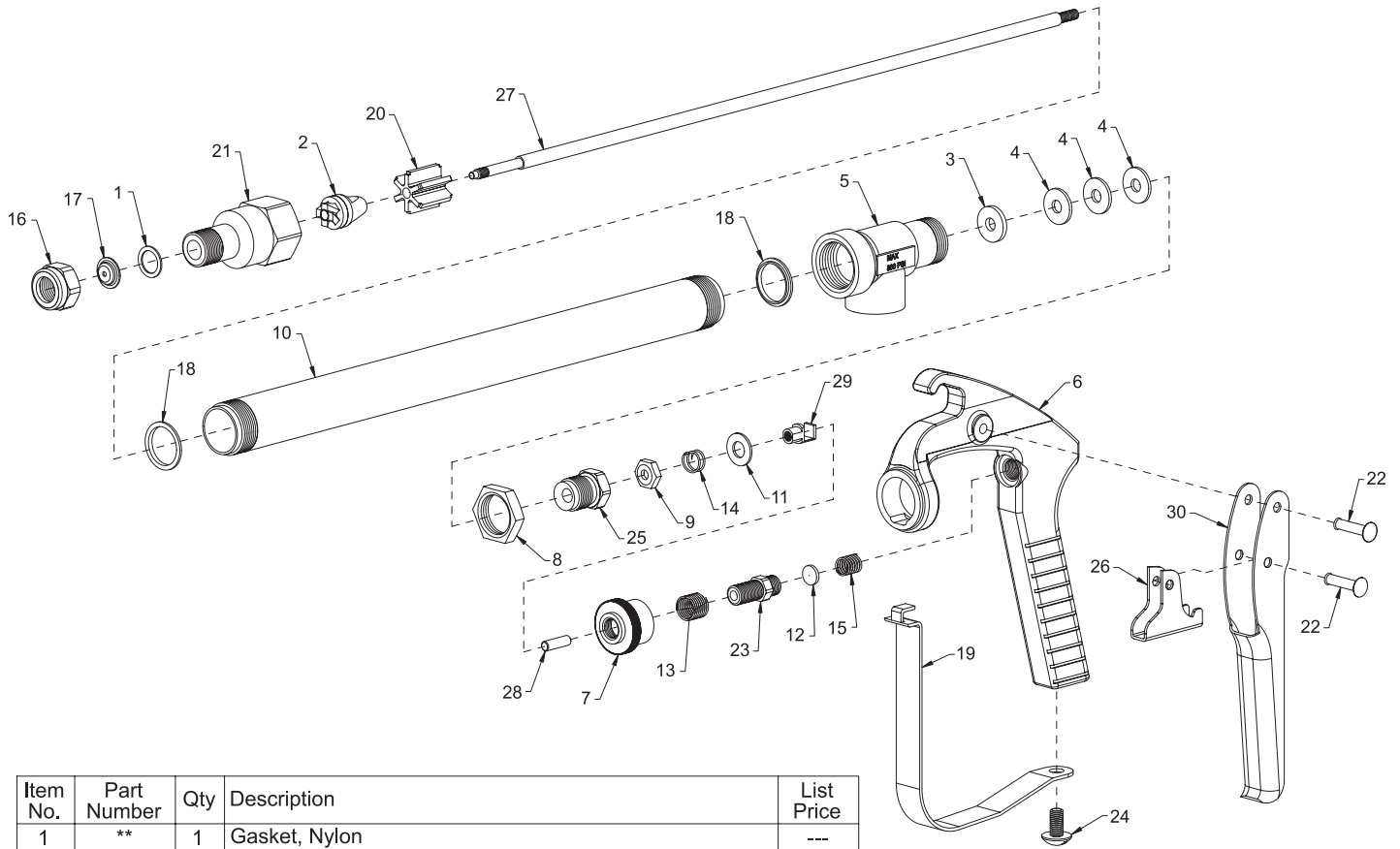
The sprayer should be winterized before storage by pumping a 50-50 solution of water and anti-freeze through the entire plumbing. Proper care and maintenance will prolong the life of the sprayer.

  <b>CAUTION</b>  
<b>PRESSURE SWITCH OPERATION</b>
Pressure switch is pre-set at the factory. Improper adjustment of the pressure switch, may cause severe overload or premature failure. If the pump is subjected to rapid cycling during normal operation, or infrequent periods, damage may occur.

### Strap Attachment to a "Bent" Buckle



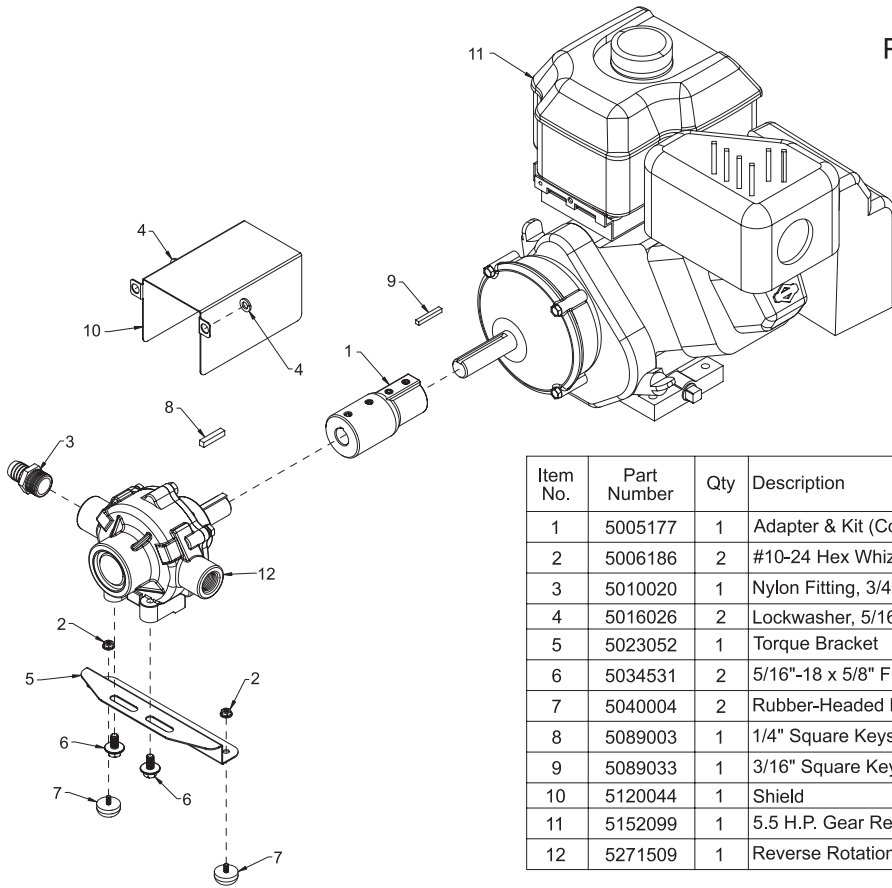
Exploded View/Parts List:  
Handgun #5163005



Item No.	Part Number	Qty	Description	List Price
1	**	1	Gasket, Nylon	---
2	**	1	Seat Plug, Seat Plate, Washer, & Core Sub-Assembly	---
3	**	1	Packing Washer, Type 302 Stainless Steel	---
4	**	3	Packing, Leather	---
5	5002203	1	Inlet Body, Aluminum	25.28
6	5002205	1	Handle Body, Aluminum	47.36
7	5006072	1	Stop Adjustment Nut, Steel - Zinc Plated	3.97
8	5006118	1	Locknut, Steel - Zinc-Plated	2.89
9	5006244	1	Stem Nut, Steel - Nickel Plated	4.72
10	5009080	1	Tubing, Aluminum	32.40
11	5016061	1	Washer, Stainless Steel	1.26
12	5016071	1	Spring Guide Washer, Type 302 Stainless Steel	2.11
13	5019069	1	Spring for Stop Adjustment Nut, Stainless Steel	1.32
14	5019083	1	Trigger Stop Spring, Stainless Steel	2.54
15	5019107	1	Main Spring, Stainless Steel	4.30
16	5046033	1	Cap, Aluminum	1.07
17	5063071	1	Orifice Disc, Stainless Steel	1.24
18	5072171	2	Gasket, Nylon	---
19	5076011	1	Trigger Guard, Steel - Nickel Plated	9.09
20	5077015	1	Guide Vane, Nylon	6.63
21	5084016	1	Nozzle Housing, Aluminum	15.14
22	5111017	2	Rivet, Steel - Zinc Plated	1.26
23	5117070	1	Spring Screw, Steel - Zinc Plated	4.19
24	5117143	1	Screw, Stainless Steel	1.67
25	5117165	1	Packing Screw, Aluminum	4.30
26	5131012	1	Trigger Stop, Steel - Nickel Plated	4.47
27	5132039	1	Stem, Type 416 Stainless Steel	19.95
28	5134010	1	Spring Stud, Stainless Steel	3.03
29	5166017	1	Trigger Guide, Steel - Nickel Plated	13.47
30	5166026	1	Trigger, Steel - Nickel Plated	5.09

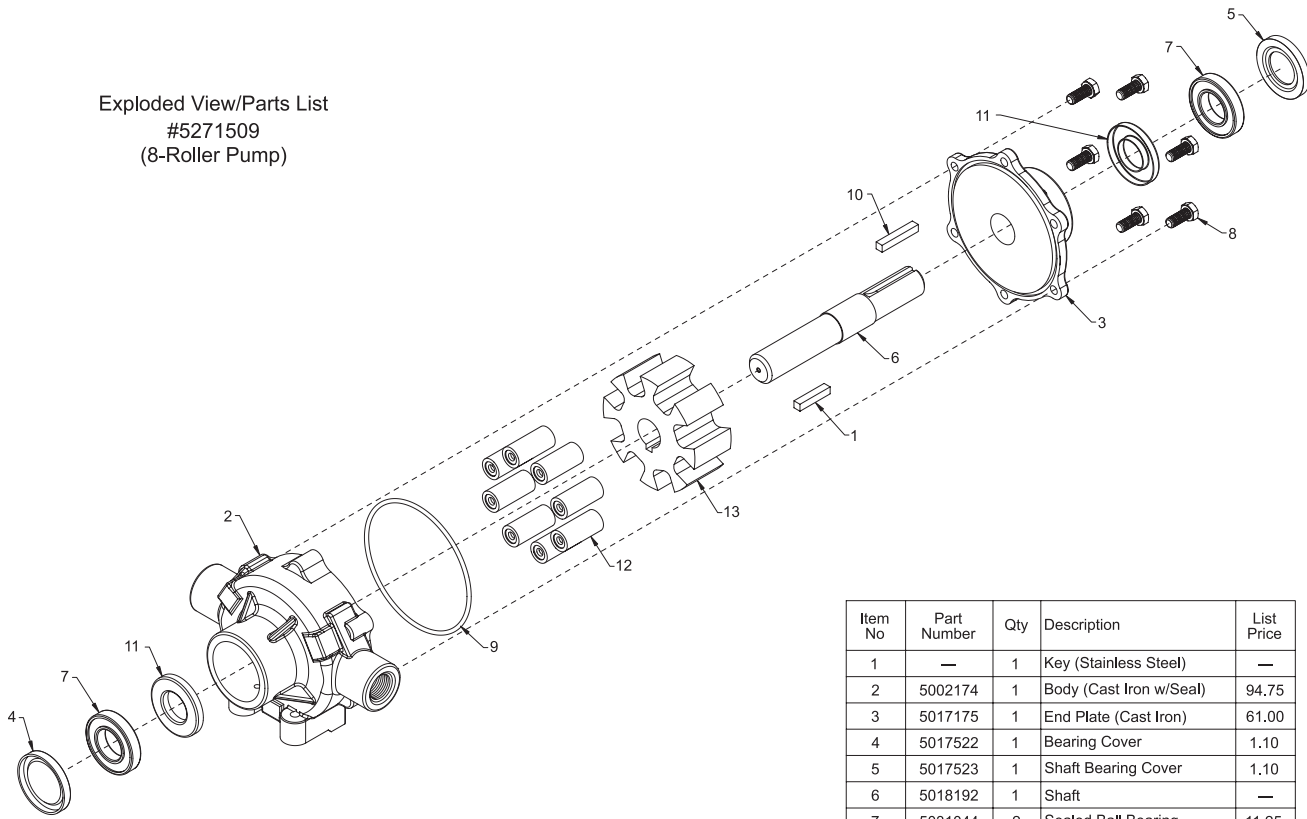
\*\* = Available in Spare Parts Kit #5168190 (\$33.32) ONLY!

## Pump/Engine Sub-Assembly #5275145



Item No.	Part Number	Qty	Description	List Price
1	5005177	1	Adapter & Kit (Coupler)	39.25
2	5006186	2	#10-24 Hex Whiz (Flange) Locknut	.10
3	5010020	1	Nylon Fitting, 3/4" MNPT x 3/4" HB	.61
4	5016026	2	Lockwasher, 5/16"	.25
5	5023052	1	Torque Bracket	4.81
6	5034531	2	5/16"-18 x 5/8" Flange Lock Screw	.44
7	5040004	2	Rubber-Headed Machine Screw Bumper (#10-24)	1.75
8	5089003	1	1/4" Square Keystock x 1 1/4" Long	.45
9	5089033	1	3/16" Square Keystock x 1 3/8" Long	.40
10	5120044	1	Shield	5.74
11	5152099	1	5.5 H.P. Gear Reduction Engine	555.57
12	5271509	1	Reverse Rotation 8-Roller Pump	261.84

### Exploded View/Parts List #5271509 (8-Roller Pump)

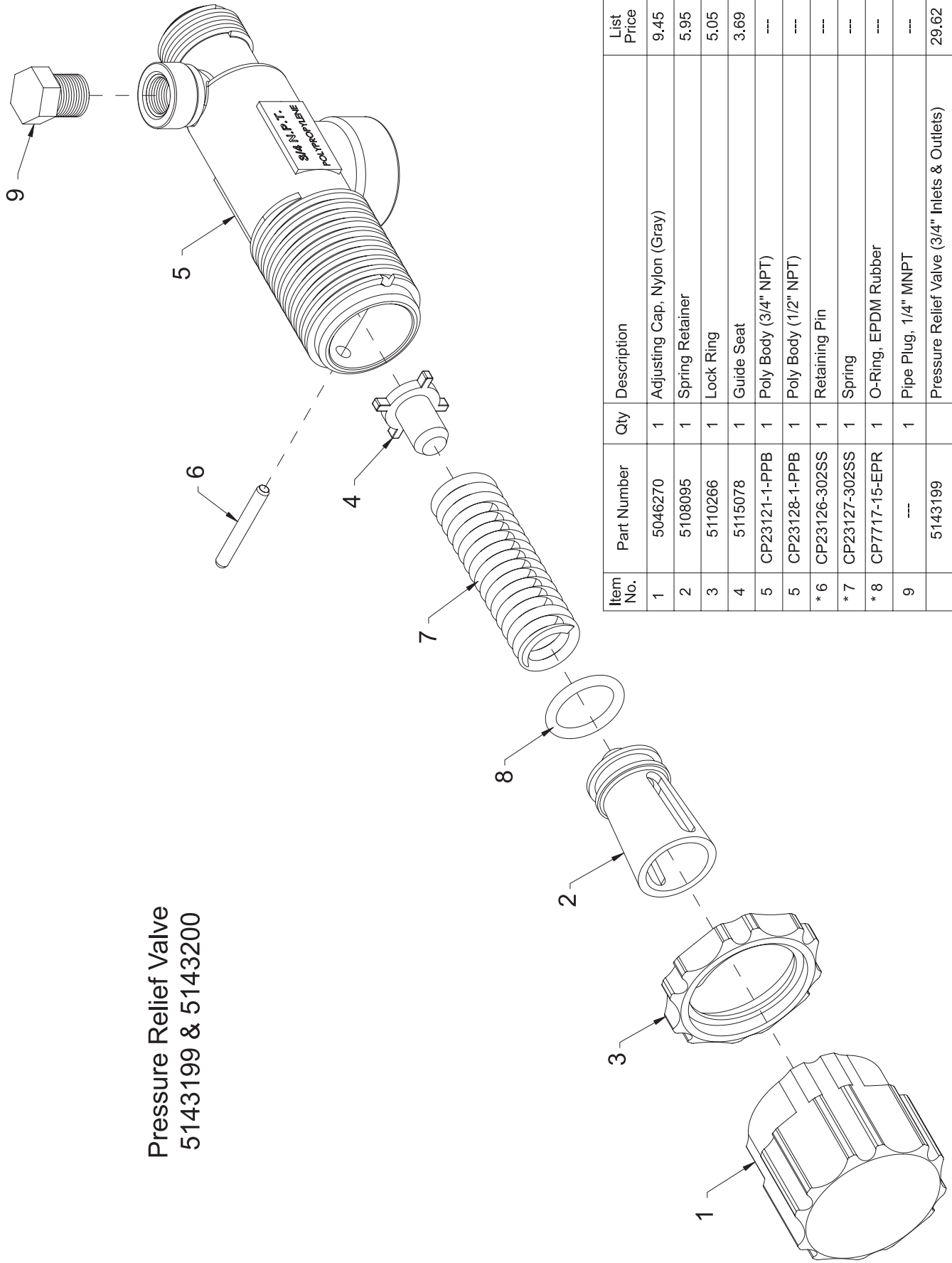


Performance data for pump No. 5271509

Pump Speed (RPM)	0 p.s.i.		50 p.s.i.		100 p.s.i.		150 p.s.i.		200 p.s.i.		250 p.s.i.		300 p.s.i.	
	GPM	HP	GPM	HP	GPM	HP	GPM	HP	GPM	HP	GPM	HP	GPM	HP
600	14.0	.45	13.1	.87	12.1	1.41	11.2	1.98	10.6	2.5	10.0	3.1	9.1	3.7

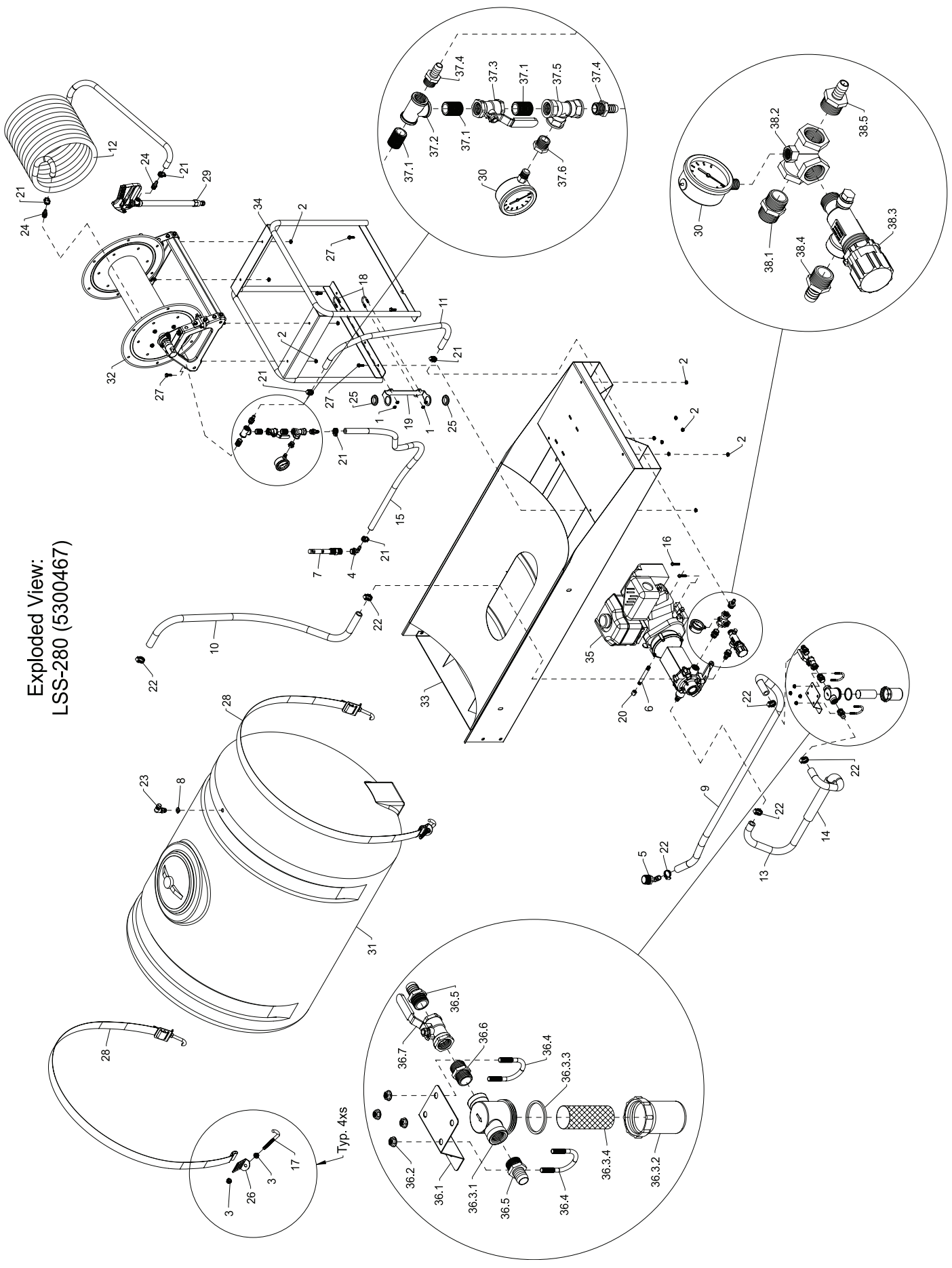
Item No.	Part Number	Qty	Description	List Price
1	—	1	Key (Stainless Steel)	—
2	5002174	1	Body (Cast Iron w/Seal)	94.75
3	5017175	1	End Plate (Cast Iron)	61.00
4	5017522	1	Bearing Cover	1.10
5	5017523	1	Shaft Bearing Cover	1.10
6	5018192	1	Shaft	—
7	5031044	2	Sealed Ball Bearing	11.25
8	5034038	6	H.H.C.S., 5/16"-18 x 3/4"	.55
9	5072059	1	O-Ring Gasket	1.25
10	5089012	1	Key	1.25
11	5110058	2	Viton Seal (Standard)	9.65
12	5112030	8	Super Roller (Standard)	2.75
13	5172137	1	Rotor (Phenolic)	44.58

**Pressure Relief Valve  
5143199 & 5143200**



Item No.	Part Number	Qty	Description	List Price
1	5046270	1	Adjusting Cap, Nylon (Gray)	9.45
2	5108095	1	Spring Retainer	5.95
3	5110266	1	Lock Ring	5.05
4	5115078	1	Guide Seat	3.69
5	CP23121-1-PPB	1	Poly Body (3/4" NPT)	---
5	CP23128-1-PPB	1	Poly Body (1/2" NPT)	---
* 6	CP23126-302SS	1	Retaining Pin	---
* 7	CP23127-302SS	1	Spring	---
* 8	CP7717-15-EPR	1	O-Ring, EPDM Rubber	---
9	---	1	Pipe Plug, 1/4" MNPT	---
	5143199		Pressure Relief Valve (3/4" Inlets & Outlets)	29.62
	5143200		Pressure Relief Valve (1/2" Inlets & Outlets)	29.62
	5168717		Spare Parts Kit (Included all items marked with *)	14.59

Exploded View:  
LSS-280 (5300467)





Parts List: LSS-280 (5300467)

Item No.	Part Number	Qty	Description	List Price
1	5006306	4	1/4"-20 Hex Whiz (Flange) Locknut	.05
2	5006307	12	5/16"-18 Hex Whiz (Flange) Locknut	.09
3	5006337	8	1/2"-13 Hex Whiz (Flange) Locknut	.17
4	5010036	1	Nylon Elbow, 3/4" MNPT x 1/2" HB	.92
5	5010159	1	Nylon Elbow, 1 1/4" MNPT x 3/4" HB	3.28
6	5011126	1	1/4" x 4 1/2" Galv. Pipe Nipple	3.80
7	5014011	1	Delta Jet Agitator	4.43
8	5016066	1	Garden Hose Washer	.20
9	5020211	1	Hose, 3/4"-2 Brd. x 60"	6.91
10	5020227	1	Hose, 3/4"-1 Brd. x 48"	7.15
11	5020291	1	Hose, 1/2"-2 Brd. x 30"	3.46
12	5020309	1	Hose, 1/2"-2 Brd. x 300 Ft.	350.00
13	5020311	1	Hose, 3/4"-2 Brd. x 50"	5.96
14	5020312	1	Hose, 1 1/4"-2 Brd. x 10"	3.93
15	5020484	1	Hose, 1/2"-2 Brd. x 54"	6.06
16	5034069	4	H.H.C.S., 5/16"-18 x 1 1/2" (Full Thread)	.25
17	5034111	4	1/2" x 6" Hook Bolt	2.60
18	5034197	2	Round U-Bolt, 1/4"-20 x 1" x 1 3/4" (3/4" Thread)	.90
19	5038637	1	Handgun Holder Bracket	4.29
20	5046057	1	1/4" N.P.T. Galv. Hex Pipe Cap	1.25
21	5051022	6	Hose Clamp, 1/2"	.62
22	5051024	6	Hose Clamp, 3/4"	.67
23	5056057	1	Nylon Elbow, 11/16" U.N.F. x 3/4" HB	1.24
24	5067052	2	Steel Fitting, 1/2" MNPT x 1/2" HB	4.60
25	5075014	2	Rubber Grommet (Black)	2.79
26	5108041	4	Tank Strap Buckle, Bent	3.10
27	5117300	8	5/16"-18 x 1" Flange Whiz Lock Screw	.22
28	5133103	2	Nylon Strap (1 3/4" x 96")	7.00
29	5163005	1	GunJet Spray Gun	120.98
30	5167034	2	Gauge, Liquid-Filled, 0-400# p.s.i.	14.50
31	5169004	1	200 Gallon Horizontal Tank	349.00
32	5272182	1	Manual Hose Reel	473.00
33	5272229	1	Skid Weldment (9-200)	312.25
34	5274195	1	Reel Mount Weldment	67.00
35	5275145	1	Engine/Pump Sub-Assembly	904.21
36	5275334	1	Strainer Assembly	--
36.1	5038258	1	Strainer Bracket	3.99
36.2	5006307	4	5/16"-18 Hex Whiz (Flange) Locknut	.09
36.3	5116136	1	Strainer	14.25
36.3.1	5046173	1	Strainer Cap	.94
36.3.2	5058035	1	Strainer Bowl	3.55
36.3.3	5072194	1	Viton Gasket	5.85
36.3.4	5116131	1	Screen (50 Mesh)	5.25
36.4	5034065	2	Round U-Bolt, 5/16"-18 x 1 1/2" x 2 3/16"	1.15
36.5	5010020	2	Nylon Fitting, 3/4" MNPT x 3/4" HB	.61
36.6	5011055	1	Nylon Close Nipple, 3/4" MNPT	.56
36.7	5143190	1	3/4" "T-800" Brass Ball Valve	9.99
37	5275335	1	Hose Reel/Agitator Plumbing Assembly (LSS-280)	--
37.1	5011046	3	1/2" Galvanized Close Nipple	1.32
37.2	5010086	1	1/2" NPT Galvanized Tee	1.95
37.3	5143197	1	1/2" T-800 Brass Ball Valve	8.99
37.4	5067017	2	Nylon Fitting, 1/2" MNPT x 1/2" HB	.48
37.5	5010113	1	Nylon "Tee" Fitting, 1/2" FNPT	3.09
37.6	5041055	1	Nylon Reducing Bushing, 1/2" MNPT x 1/4" FNPT	1.12
38	5275336	1	Pressure Relief Valve Assembly	38.35
38.1	5011055	1	Nylon Close Nipple, 3/4" MNPT	.56
38.2	5010135	1	Nylon Gauge Tee, 3/4" FNPT	7.20
38.3	5143199	1	Pressure Relief Valve, (3/4" NPT)	29.62
38.4	5067013	1	Nylon Fitting, 3/4" MNPT x 5/8" HB	.55
38.5	5067012	1	Nylon Fitting, 3/4" MNPT x 1/2" HB	.57