

USB Installation Guide

Notes: 1. Levellogger Gold Software comes preloaded with necessary USB drivers.
2. The following steps are based on the Windows® XP operating system, if using another operating system, refer to the Levellogger User Guide.

1. Connect the USB device into the computer. This will begin the 'Found New Hardware Wizard'.
2. The 'Found New Hardware Wizard' will give the option to connect to Windows Update to search for software components, select "No, not at this time".
3. Two options are provided:
 - i. If you have the Levellogger Software CD, select "Install the software automatically".
 - ii. If you do not have the CD, select "Install from a list or specific location". In the next window select "Search for the best drivers in these locations" and "Include this location in the search". Select the browse button and choose this location:
C: → Program Files → Solinst Folder → Levellogger Folder → USB Drivers

Note: During the USB Installation, a message may appear stating that the USB Serial Converter has not passed Windows Logo testing, select "Continue anyways".

4. Windows will confirm that the unit is now installed.

Note: If the 'Found New Hardware Wizard' does prompt once again, please continue through with the same process (steps 1 – 4).

5. Restart your computer.

Troubleshooting Guide

Levellogger Software:

1. You must have administrator privileges to install software on a computer.
2. Windows 98, 2000, and XP operating systems support the Levellogger Gold Software.

Levellogger data has been accidentally erased:

If the Levellogger has been restarted and the old data has not been saved, select the download option 'Recover Previous Log'. This will download your previous data set.

Communication Errors:

"Port Cannot Open", "Check Com Port"

1. Reason: Software was started before USB device was connected to computer.
Solution: Restart computer, connect USB device, start software.
2. Reason: Incorrect Com Port is selected in Com Port selection menu.
Solution: Check the Com Port location for the installed device, by accessing the "Device Manager" (through the Control Panel), and selecting the "Ports" section. This will state the Com Port the device is installed on.
3. Reason: Another device shares the same Com Port or is causing a communication conflict.
Solution: Ensure that software for PDA or other devices, which automatically synchronize, are disabled. Ask your system administrator for assistance.
4. Reason: RS-232 Adaptor to USB converter is improperly installed.
Solution: Reinstall supplied driver for converter device.

Note: Not all converters are compatible with all makes and models of computers.

"Communication Time-out"

1. Reason: Levellogger, Direct Read Cable, or communications device has failed.
Solution: Narrow down the failure by using a different Levellogger, Direct Read Cable, or another communications device. Contact a Solinst technical representative.

Tip It is important to ensure the installation cap or direct read cable is attached to the Levellogger during storage to prevent the battery from draining.

Quick Start Guide Levellogger Gold Series



Using the Levellogger Gold

To begin using your Levellogger Gold, download the newest version of Levellogger Gold Software and User Guide by visiting www.solinst.com/Downloads/ or insert the software CD provided.

Installing the Software



1. To activate the software install, click on the 'setup.exe' file located on the software CD.
2. The Software Installation Wizard will guide you through the remaining installation process.

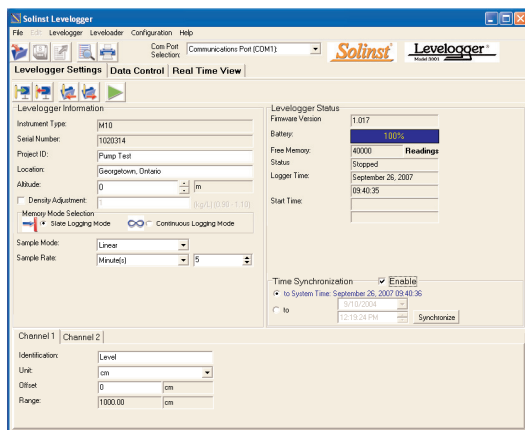
Installing the Hardware

1. Connect the communications device, either the Optical Reader or PC Interface Cable, to the computer.

Note: The USB connections require the installation of a driver to the assigned device. See the USB Installation Guide for details (back page).

Programming the Levellogger

1. Connect the Levellogger to the communications device and start the software.
2. Select the appropriate COM or USB port for the connected communications device from the centre drop-down menu.
3. Click the 'Retrieve Settings from Levellogger' icon.  This will retrieve and display the current programmed settings for the connected Levellogger. You can now customize the Levellogger by entering your Project ID, Location, Altitude (above sea level), and Sampling Mode and Rate.
4. When programming is complete, click the 'Program Settings to Levellogger' icon. 




Levellogger Settings Window



PC Interface Cable





Optical Reader Connection

Tip If a number of Levelloggers are to be programmed with identical inputs, clicking the 'Save Default Settings' icon will create a template. 





Starting and Stopping the Levellogger

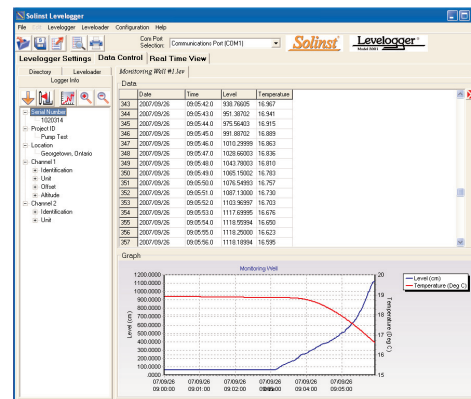
1. To start the Levellogger, click on the 'Start' icon. 

Note: When the 'Start' icon is selected, two windows will pop-up. One will alert that the previous data will be erased; the other will allow the option to synchronize the Levellogger clock to your PC clock.

2. The 'Start Levellogger' window will appear. This will provide the option to start the Levellogger 'Now' or program 'At' a future start time. 
3. To stop the Levellogger, click on the 'Stop' icon. 


Downloading and Working with Data

1. Click the 'Data Control' tab to access the 'Data Control' window. This window is laid out in three sections: Levellogger settings, tabular data, and graphical data. 
2. To download the data from a connected Levellogger, select the 'Logger Info' sub-tab, and then the 'Download Data from Levellogger' icon. The data will be presented in both tabular and graphical format. 
3. To save data, click the 'Save Data' icon and input desired name for the saved file. 
4. To export the file for use in other software, click the 'Export' icon. The file will be exported to a *.CSV file. 

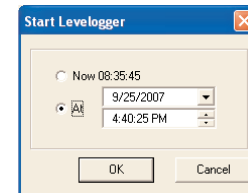


Data Control Window

Compensate the Data

Once a data file is opened, the user can select the 'Data Compensation Wizard' icon to perform Barometric, Manual Data Adjustments or other data compensations. Please refer to the Levellogger User Guide for more information on performing compensations. 

Tip The 'future start' option is ideal for synchronizing the data collection of multiple Levelloggers.



Start Levellogger Window