

## INSTRUCTIONS

△ Keep this sheet for your records.



# Sure-Seal ATV/UTV DripTorch

No. 85030

Sure-Seal ATV/UTV DripTorch



### CAUTION

Backfiring equipment should be used by trained, experienced personnel only. Training and fuel selection are the sole responsibility of the user. Precautions should be taken to prevent danger to yourself and others. A means of escape should always be located before setting fires where rapid spread may prove hazardous to yourself or others. All petroleum products should be handled with the same precautions as when working with gasoline. Keep the torch in good working condition, make sure all connections are tight, inspect on a regular basis, and replace any damaged parts with original replacement parts only.

### Assembly Instructions

1. To simplify installation, the burner arm assembly is a two-piece design. Attach the longer complete burner arm assembly with the wick, shroud, etc. to the shorter pivoting arm that protrudes from the rear of the tank by inserting the two pieces together and placing the two bolts through the arm and assembling with the included hardware. This two-piece design also allows you to easily disassemble the torch arm from the unit for transporting and storage if you choose.
2. Connect the fuel supply line. After the burner arm assembly is in place connect the fitting on the end of the fuel line coming from the pump to the end of the fitting going in to the valve on the back of the wand assembly.
3. If desired a hand held drip torch mounting bracket (Stock Number 85051, sold separately) can be mounted on the right side of the ATV torch using slotted holes in

the right side of the base plate.

Mounting hardware is not included.

### Connecting the Pump Assembly

Make the electrical connection to a 12-volt system. The pump is provided with a quick connect fitting. We offer a couple of easy assembly options (sold separately): Stock Number 14054, 12 V accessory adapter with cord and on/off switch, or Stock Number 14058, Alligator clips w/ cord and on/off switch that attaches directly to a battery. You can also hard wire it in to your system if you prefer. It is recommended to use an inline fuse if you choose to do so. Consult a professional for installation.

### Mounting

It is important to securely mount the unit to whatever off-road vehicle it is intended to be used on. There are pass through slots on top of the tank that allow quick access for mounting with ratchet straps (not provided) that work for many applications. We do offer an optional set of quick mount brackets (Stock Number 85033). The quick mount brackets allow you to have a quick disconnect mounting system to quickly install or remove the torch. The brackets are made so that you can either drill your own holes for mounting with hardware you provide or weld in place and then once installed the torch can be quickly mounted or dismantled simply by removing the 4 pins.

### Instructions for use

1. Always consult your agency's policy for authorized fuel mixtures based on your burning conditions. A good mixture to start with is a diesel-to-gasoline ratio of 3:2 or 60% diesel to 40% gas, and then adjust the mixture as necessary for your burning conditions and needs.

### PRODUCT SUPPORT

800-430-5566

If you need more information or some expert advice from an experienced professional, call our Product Support team.

### SALES

P 800-647-5368

F 800-543-4203

Our sales department will gladly take your order, update you on pricing, or fax an order form.

### ONLINE

[www.forestry-suppliers.com](http://www.forestry-suppliers.com)



205 West Rankin Street  
Jackson, MS 39201



# INSTRUCTIONS



Explosive vapors may be released from these mixtures. Handle mixtures accordingly.

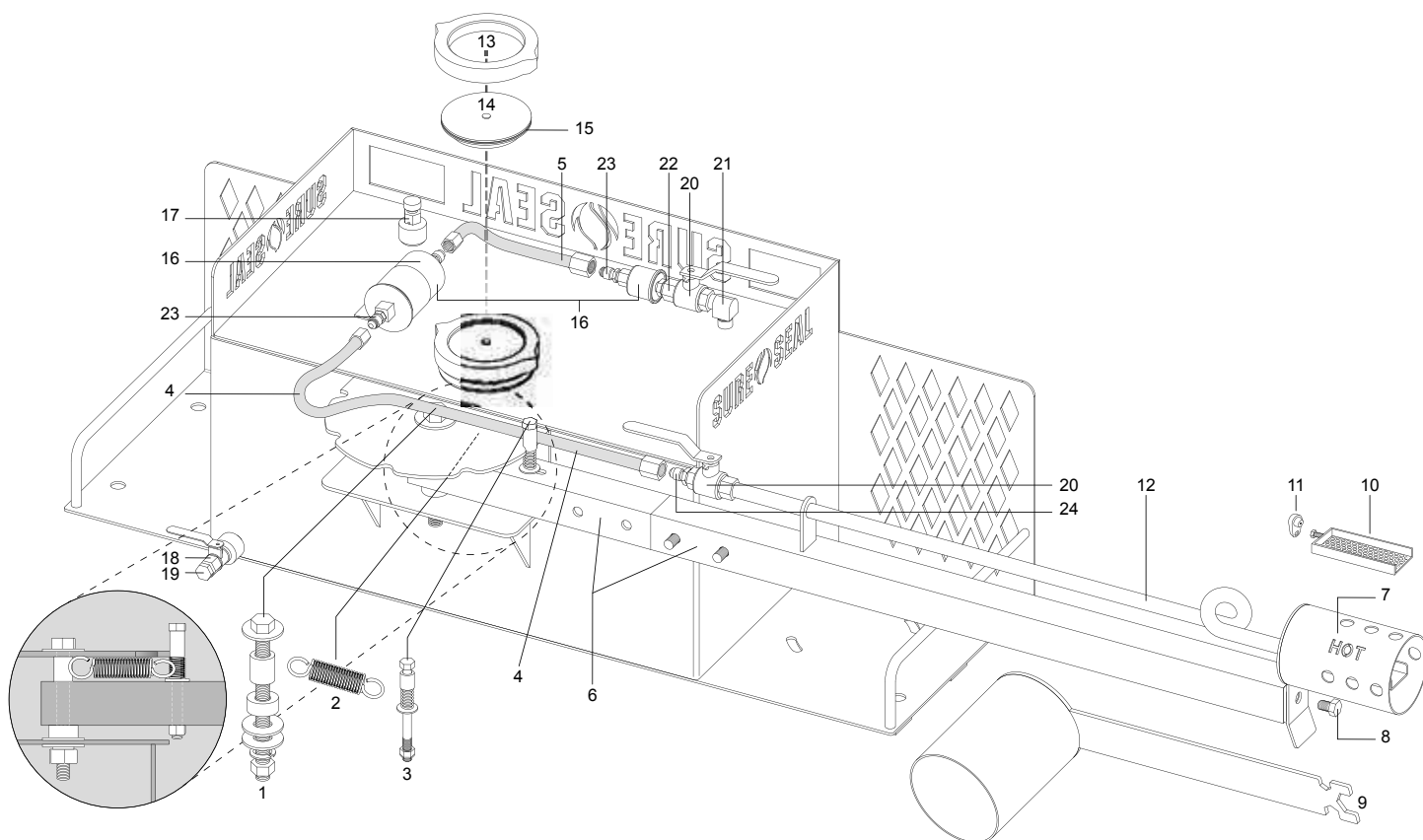
## **DO NOT USE STRAIGHT GASOLINE!**

2. Prepare for use by removing the top with lockring and gasket and pouring in your fuel mixture. Tank should not be opened or filled near an open flame, hot coals, sparks or while smoking. Tank may contain dangerous vapors! The capacity of the tank is 8 gallons, but only fill it with what fuel you expect to need. Replace the top with lockring and gasket, then screw the lockring down hand tight (8 ft. lbs – and then be sure to wipe off any spillage on the tank surface. Never operate torch without the gasket because it could cause some fuel to leak onto the outside tank.
3. Open the breather valve that is positioned on the top of the tank by screwing it counterclockwise just enough to open so that the tank will be allowed to draw in more air as it empties the fuel.
4. Open the valve at the top rear of the tank that is positioned between the tank and the pump. If desired there is an optional remote emergency shutoff cable (stock # 85034), that can be attached to this valve that is 10 ft. long and can be run to the operator's seat of a UTV for example so that the fuel can be cutoff remotely.
5. To ignite the wick, follow these steps. First make sure the valve coming from the tank to the pump is in the fully open position, then make sure the valve at the burner arm is in the closed position, then turn on power to the fuel pump, next slowly open the valve at the burner arm just enough to control the flow of fuel so the fuel will saturate the wick assembly, after the wick is saturated close the valve at the burner arm again, then carefully light the wick preferably with a long stemmed lighter or other lighting source that would keep your hands at a safe distance. You are now ready to operate the torch.
6. To operate the torch after the wick is lit and burning, you can open the valve at the burner arm to allow fuel to flow across the wick and project the flame. Open the valve enough to get the fuel and flame to extend beyond the wick and to the desired distance as you don't want it to pool up in the shroud, but note that it is not necessary to open the valve all the way unless you need the maximum distance. Depending on your circumstances you can cut off the fuel flow manually with the valve at the burner arm or electrically with an on/off switch. In general operation it is important to note that the wick must have fuel on it to continue to burn. Intermittently cutting the fuel pump off and on helps to keep the wick saturated. If it is not in use the wick will burn out after several minutes without an additional fuel source. **NOTE:** As soon as you notice that you have run out of fuel cut off power to the pump. **DO NOT RUN THE PUMP DRY** as it could cause damage to the pump.
7. Adjust the burner arm to the desired position for your needs. You can choose from 5 positions, that allow burning to either side or directly behind you. Be aware of the direction of flame travel when personnel are nearby! Always inspect the area to be burned and identify and remove any potential obstacles in the desired path beforehand.
8. To extinguish the wick after use, cut off the power to the pump and both valves and then take the snuffer and place it over the end of the shroud covering the wick. Leave it in place until the wick is out. **DO NOT ATTEMPT TO BLOW OUT THE WICK.** Without additional fuel source the wick will typically burn out on its own after several minutes. Please note the slots cut in the end of the snuffer handle fit most of the fittings and connections which allows for quick adjustments or emergency repairs in the field.

## **Storage**

For long term storage or transportation of the torch it is recommend to close all of the valves and drain any remaining fuel from the tank. There is a drain at the bottom rear of the tank. Simply remove the plug and turn the valve to drain the fuel into a suitable container. For long term storage it is also recommended to loosen the fuel lines and drain all remaining fuel from the system.

## ACCESSORIES AND REPLACEMENT PARTS



| Replacement Parts |                                    |       |
|-------------------|------------------------------------|-------|
| Key               | Description                        | No.   |
| 1                 | Boom Pivot Bolt Assembly           | 85047 |
| 2                 | Boom Angle Adjustment Spring       | 85052 |
| 3                 | Boom Angle Adjustment Rod Assembly | 85046 |
| 4                 | Fuel Pump to Burner Tube Fuel Line | 85048 |
| 5                 | Fuel Tank to Fuel Pump Fuel Line   | 85049 |
| 6                 | Boom Assembly                      | 85045 |
| 7                 | Flame Shroud                       | 85041 |
| 8                 | Flame Shroud Bolt                  | 85042 |
| 9                 | Repl. Snuffer Tool                 | 85035 |
| 10                | Repl. Igniter Assembly             | 85040 |
| 11                | Repl. Nozzle                       | 85039 |
| 12                | Burner Tube with Fuel Trap         | 85043 |

| Replacement Parts |                                 |       |
|-------------------|---------------------------------|-------|
| Key               | Description                     | No.   |
| 13                | Lock Ring                       | 85061 |
| 14                | Fuel Filler Cap Assembly        | 85021 |
| 15                | Tank Lid Gasket                 | 85038 |
| 16                | Fuel Pump/Filter Kit            | 85037 |
| 17                | Breather Valve                  | 85374 |
| 18                | Fuel Drain Valve                | 85023 |
| 19                | Fuel Drain Plug, 0.250 NPT      | 85024 |
| 20                | Fuel Shutoff Valve              | 85044 |
| 21                | 0.250 NPT Street Elbow          | 85019 |
| 22                | 0.125 to 0.250 NPT Adapter      | 85018 |
| 23                | 0.250 Flare x 0.125 MIP Adapter | 85069 |
| 24                | 0.250 Flare x 0.250 MIP Adapter | 85068 |

| Accessories                                      |       |
|--|-------|
| Description                                      | No.   |
| Quick Mount Brackets                             | 85033 |
| Remote Shutoff Cable                             | 85034 |
| Mounting Bracket for Handheld Torch              | 85051 |
| 12V DC Adapter                                   | 14054 |
| 12V DC Power Switch w/Cable and Alligator Clamps | 14058 |