

# Technical Bulletin M1585

▲ Keep this sheet for your records.

## Panama Stainless Steel Wide Mouth Drip Torch

- No. 85329**  
Panama Drip Torch, 12" Burner
- No. 85011**  
Panama Drip Torch, 15" Burner
- No. 85330**  
Panama Drip Torch, 19" Burner
- No. 85012**  
Truck Bracket



### Panama Stainless Steel Wide Mouth Drip Torch Replacement Parts

#### Product Description

Filler cap's recessed neoprene gasket prevents fuel leakage. Brass regulator valve controls fuel flow. Safety loop in burner prevents flashback. Uses diesel or stove oil. Stainless steel tank has 2-3/4" W easy-fill opening. Three burner lengths available. Streamlined burner assembly won't snag in bushes. Fiberglass wick. Capacity: 1-3/8 gallons. Empty weight: 4 lbs. Optional Torch Holder bolts to pick-up bed, holds torch securely.

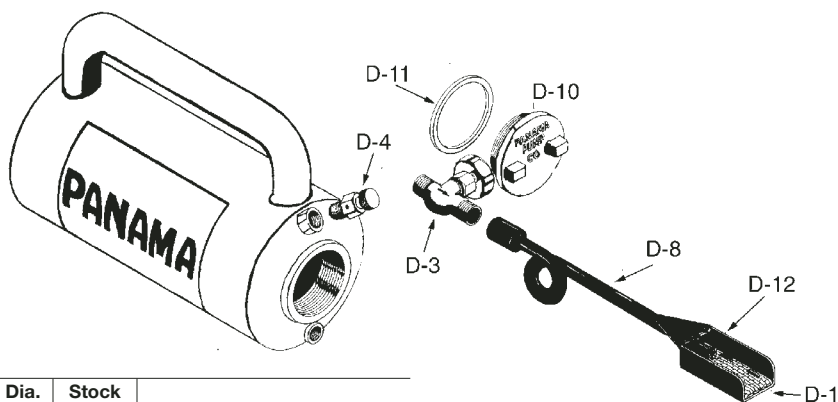
#### Tech Support 800-430-5566

If you need more information or would like advice from an experienced professional, call our Technical Support team.

#### Sales 800-647-5368

Our sales department will gladly fax you an order form, update you on pricing, or take your order over the phone.

**Online**  
[www.forestry-suppliers.com](http://www.forestry-suppliers.com)  
For credit card and open account orders, visit our web site to place your order.



Dia. No.	Stock No.	Description
D-1	85337	Burner Wick with staples
D-8	85336	12" Burner and Nozzle
D-2	85363	15" Burner and Nozzle
D-9	85335	19" Burner and Nozzle
D-3	85331	Oxygen-Type Regulator Valve
D-10	85334	Wide Mouth 2-1/4" Filler Cap
D-11	85333	Gasket for wide mouth filler cap, 2-1/8" I.D.
D-6	85349	Gasket for regular width filler cap, 7/8" I.D.
D-4	85347	Vent Valve
D-12	85364	Removable Nozzle