

Technical Bulletin M0007

▲ Keep this sheet for your records.

Solo® 400 Series Hand Held Sprayers

No. 13384

Solo Model 456, 1.3 gallon

No. 13397

Solo Model 457V, 2 gallon

No. 13386

Solo Model 430-1G, 1 gallon

No. 13387

Solo Model 430-2G, 2 gallon

No. 13388

Solo Model 430-3G, 3 gallon



Solo® 400 Series Hand Held Sprayers

Cleaning

- Carefully clean sprayer after every use.
- Soap and water may be used to clean tank.
- Clean the hose and spray tube by flushing with water.
- Follow the recommendations of the chemical manufacturer for disposing of waste water and chemicals.
- Do not use aggressive or abrasive cleaning agents.

Maintenance

- Prior to storage, clean and empty sprayer.
- Always store the sprayer in a dry area, protected from freezing, heat and sunlight.
- Lubricate O-ring in pressure relief valve with non-water soluble grease* on a regular basis. Disassembly: Unscrew pressure relief valve from tank and pull the valve body out of the screw cap. Clean and lubricate.

Should pumping action become difficult, remove the pump from tank, remove pump piston from pump cylinder and grease the

O-ring of the pump piston with non-water soluble grease. Note: once tank cap is removed, the pump handle piston and cylinder (pump body) are disassembled by pulling apart.

Pump Maintenance

Pump pressure sealing is accomplished with an O-ring on the pump piston which moves within the cylinder. Periodically this O-ring should be greased with a non-water soluble grease. If worn, it should be replaced. A small umbrella valve at the bottom of cylinder prevents the formula from entering the cylinder. Keep these parts clean and replace if worn.

Tank Cap A small amount of non-water soluble grease on tank cap threads and both sides of the gasket eases tightening and loosening.

Regular Inspection Inspect and replace worn or damaged parts promptly. Pay particular attention to tank cap gasket, pressure relief valve and seal, inflation valve (if fitted), umbrella valve O-rings and seals throughout sprayer. Regular lubrication of O-rings and seals is recommended.

Tech Support 800-430-5566

If you need more information or would like advice from an experienced professional, call our Technical Support team.

Sales 800-647-5368

Our sales department will gladly fax you an order form, update you on pricing, or take your order over the phone.

Online www.forestry-suppliers.com

For credit card and open account orders, visit our web site to place your order.



Solo® 400 Series Hand Held Sprayers Troubleshooting

Problem	Cause	Solution	Conditions
Difficulty in moving pump handle	Dirty cylinder wall	Remove piston, clean and replace	All
	O-ring or piston swollen (not cleaned properly)	Replace O-ring (9) Install Pump Repair Kit	450 Series 430 Series
	No lube on piston/cylinder	Lubricate with heavy grease	
Low pressure & resistance	Damaged O-ring in relief valve	Replace O-ring (3, 4)	450 Series
	Worn or damaged O-ring on piston	Replace O-ring (9)	430 Series
	Tank cap not tight	Tighten cap	
	No lube on piston/cylinder	Lubricate piston, O-ring, and cylinder	
Leaks from end of spray wand	Worn or damaged O-ring in shut-off valve	Rebuild shut-off valve with Kit #49	All
Leaks from inside cylinder	Worn or damaged O-rings on bottom of cylinder	Replace O-ring and valve cone (14, 15)	
Leaks under cap	Damaged or missing gasket	Replace gasket (13) Replace gasket and O-ring	450 Series 430 Series
	Screw cap not tight	Pressurize unit, tighten caps until leaks stop	
Leaks from shut-off valve	Worn, damaged or loose fittings	Tighten fittings and replace worn parts	All
Leaks from hose	Worn, damaged or loose fittings	Tighten fittings and replace worn parts	
Pressure release valve sticks	Lack of lubrication or contaminated release valve assembly	Clean and lubricated pressure release valve	450 Series Only
Air escapes between the two halves of the pump support	Tank cap not tight	Tighten tank cap	450 Series Only
	Gasket twisted	Straighten gasket	
	Tank lip damaged	Repair or replace tank (1)	



17136 Neutralizer Tank Cleaner

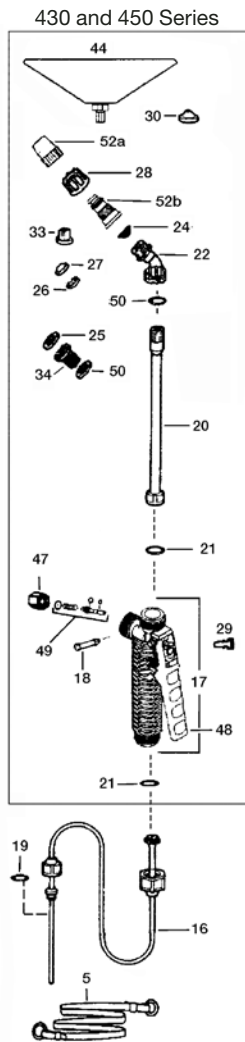
Protects from cross-contamination. Concentrated non-corrosive powder cleans a 3-gallon sprayer with just a tablespoon. One container treats approximately 200 gallons.

Solo Sprayer Accessories

Dia. No.	Stock No.	Description
30	13568	Hollow Cone Nozzle Tip
33	13280	Flat Spray Jet
34	13427	Check Valve
37	13096	60" Brass Replacement Wand
39	13190	20" Extension Tube
44	13170	Drift Guard Assembly

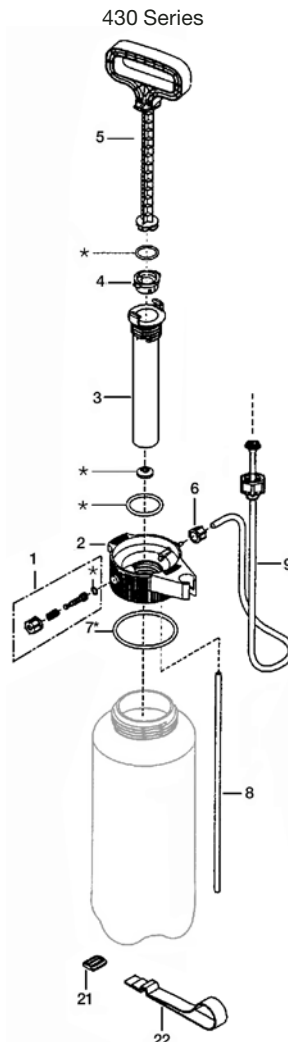
▲ Keep this sheet for your records.

Solo® 400 Series Hand Held Sprayers Replacement Parts



Solo 430 and 450 Series

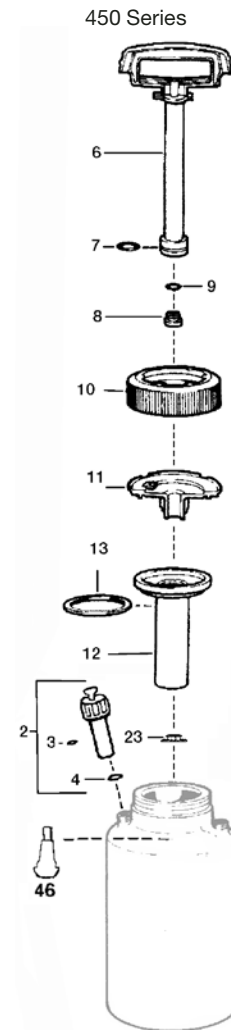
Dia. No.	Stock No.	Description
17	13417	Shut-Off Valve Assembly
18	13431	Plastic Pin
20	13155	20" Spray Wand
22	13143	Elbow
24	13140	Jet Filter Element
25	13101	O-Ring
26	13139	Swirl Plate
27	13566	Jet Cap Tip
28	13131	Retaining Nut
29	13437	Lock Clip
47	13442	Retaining Nut
48	13432	Lever
49	13408	Shut-Off Valve Repair Kit
50	13119	O-Ring
52	13039	Plastic Adjustable Nozzle Assy.



Solo 430 Series Only

Dia. No.	Stock No.	Description
1	13055	Pressure Relief Valve
2	13056	Tank Cap
3	13057	Pump Cylinder
4	13058	Pump Ring
5	13059	Pump Piston
6	13060	Screw Cap
8	13061	Tube
9	13062	Hose Assembly
21	13063	Slide
22	13064	Carrying Strap
7*	13065	O-Ring
*	13066	Repair Kit for 430

*Included in Repair Kit.



Solo 450 Series Only

Dia. No.	Stock No.	Description
2	13446	Pressure Relief Valve Assembly
3	13447	O-Ring
4	13118	O-Ring
5	13448	Carry Strap
6	13449	Pump Piston
7	13555	O-Ring
8	13554	Plug
10	13556	Tank Lid
11	13557	Cylinder Support
12	13624	Cylinder
13	13559	Gasket
16	13564	Universal Pressure Hose Assy.
19	13565	O-Ring
23	13625	Umbrella Valve
46	13577	Inflation Valve for 457V
	13567	Pump Repair Kit Includes 3, 4, 7, 9, 13, 19, 23

Accessories

Dia. No.	Stock No.	Description
30	13568	Hollow Cone Nozzle Tip
33	13280	Flat Spray Jet

Dia. No.	Stock No.	Description
34	13427	Check Valve
37	13096	60" Brass Replacement Wand

Dia. No.	Stock No.	Description
39	13190	20" Extension Tube
44	13170	Drift Guard Assembly