

# Technical Bulletin M1579

▲ Keep this sheet for your records.

## Indian Backpack Firefighting Pump Replacement Parts

**No. 85700**

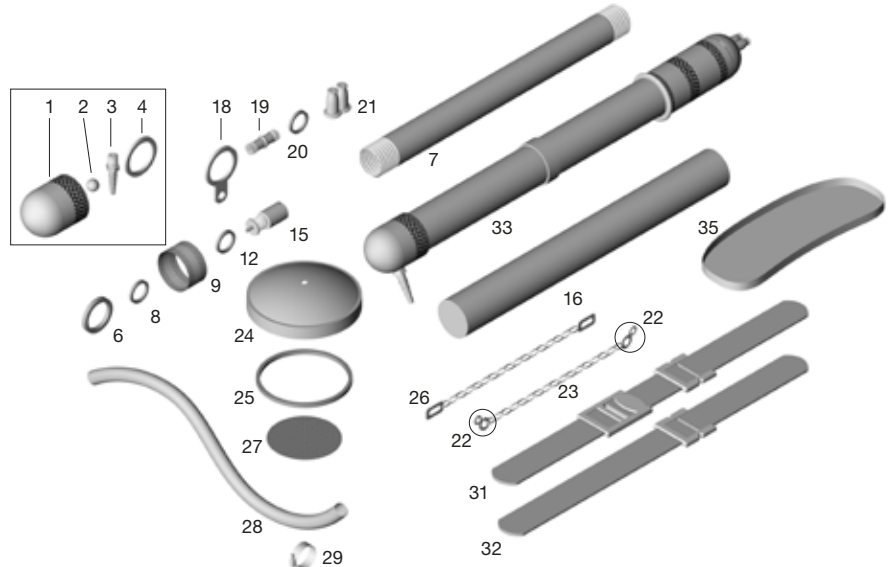
Model 90G Galvanized Tank

**No. 85701**

Model 90S Stainless Steel Tank



### Indian Backpack Firefighting Pump Replacement Parts



**Tech Support**  
**800-430-5566**

If you need more information or would like advice from an experienced professional, call our Technical Support team.

**Sales**  
**800-647-5368**

Our sales department will gladly fax you an order form, update you on pricing, or take your order over the phone.

**Online**  
**www.forestry-suppliers.com**

For credit card and open account orders, visit our web site to place your order.



Dia. No.	Stock No.	Part No.	Description
1	85406	5939	Pump Base, Galvanized
1	85407	5259	Pump Base, Stainless Steel
2	85408	5700	Check Ball
3	85409	5006	Hose Nipple, Brass
3	85410	5260	Hose Nipple, Stainless Steel
4	85411	5941	Gasket
5	85412	5931	Pump Base Assembly, Brass
5	85413	5994	Pump Base Assembly, Stainless Steel
6	85414	5961	Guide Ring, Brass
7	85416	5942	Pump Cylinder, Brass
7	85417	5995	Pump Cylinder, Stainless Steel
8	85418	5950	"U" Ring
9	85419	5949	Gland Nut, Brass
9	85420	5264	Gland Nut, Stainless Steel
12	85425	1089	"O" Ring
15	85428	5951	Check Valve Assembly, Brass
16	85430	5947	Pump Piston Tube, Brass
16	85431	5262	Pump Piston Tube, Chrome
17	85432	5958	Pump Handle, Brass
17	85433	5261	Pump Handle, Stainless Steel
18	85434	5962	Tear Drop Ring
18	85435	5988	Tear Drop Ring, Chrome

Dia. No.	Stock No.	Part No.	Description
19	85436	5963	Nozzle Bushing, Brass
19	85437	5263	Nozzle Bushing, Stainless Steel
20	85438	5707	Nozzle Gasket
21	85439	6062	Dual Nozzle, Brass
21	85440	6063	Dual Nozzle, Stainless Steel
22	85441	5936	Split Ring
22	85442	5267	Split Ring, Chrome
23	85443	5937	Beaded Chain for Nozzle
23	85444	5984	Beaded Chain for Nozzle, Chrome
24	85445	5096	Tank Cap Assembly, Galvanized
24	85446	5222	Tank Cap Assembly, Stainless Steel
25	85447	5097	Tank Cap Gasket
26	85448	5072	Tank Cap Chain
27	85449	5238	Fill Strainer
28	85450	6084	30" Hose w/out Clamp
29	85451	5110	Hose Clamp
31	85146	5981	Carrying Strap w/snaps
32	85145	5980	Carrying Strap w/out snaps
33	85404	5111	Brass Pump, complete
33	85405	5119	Chrome Plated Stainless Steel Pump, complete
35	85460	9092-0	Carrying Rack w/strap, Galvanized
	85459	5089	Strap Assembly, holds pump in carrying rack