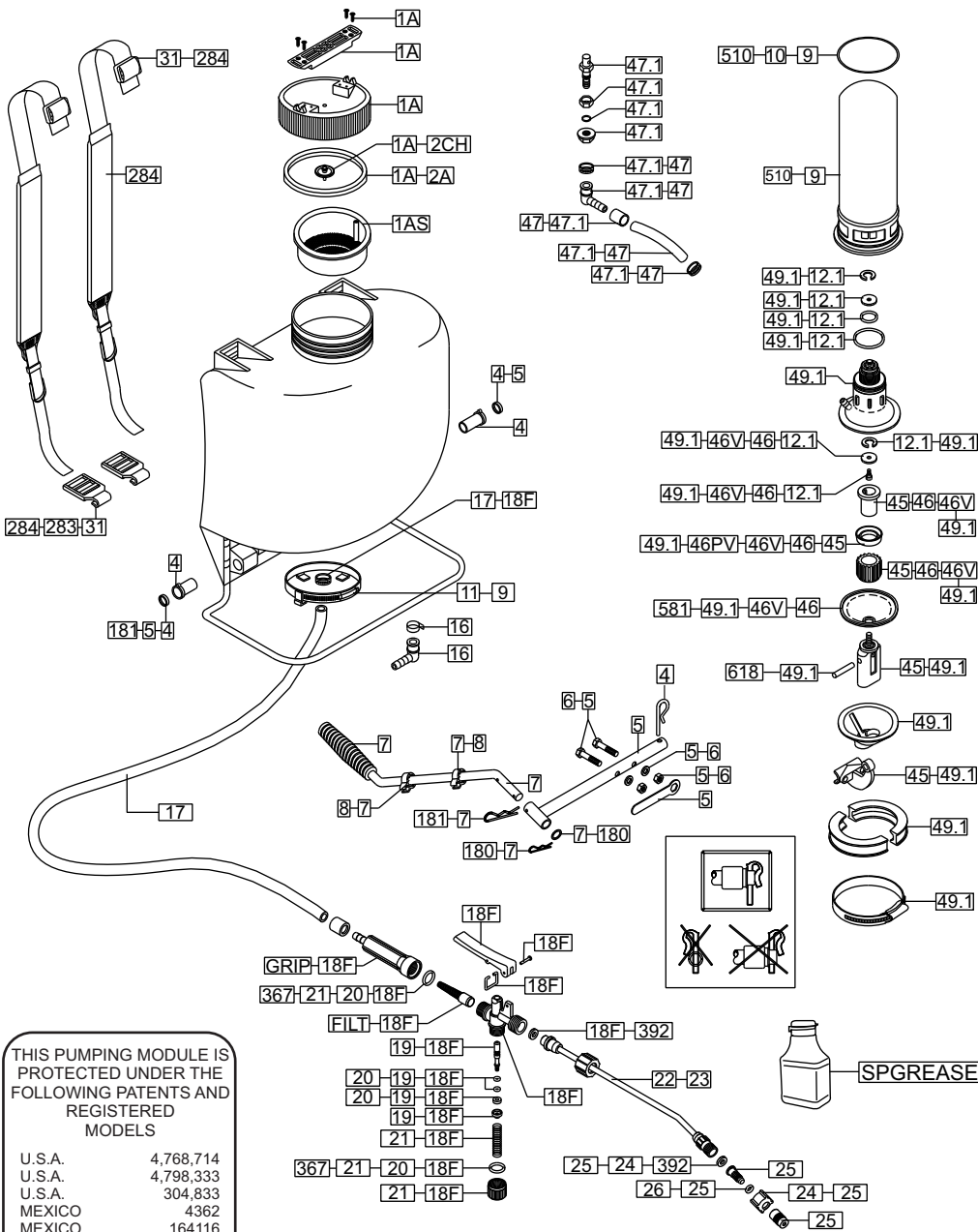


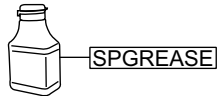
# Parts list for the SPS0 4-gallon Knapsack Sprayer



THIS PUMPING MODULE IS PROTECTED UNDER THE FOLLOWING PATENTS AND REGISTERED MODELS

U.S.A.	4,768,714
U.S.A.	4,798,333
U.S.A.	304,833
MEXICO	4362
MEXICO	164116
MEXICO	165049
OTHERS	PENDING

**ATTENTION**  
FOR BEST PERFORMANCE, PERIODICALLY GREASE PUMPING MECHANISM, ALL O-RINGS, & SEALS



## PARTS LIST

- Kit 1A 6" lid & seal.
- Kit 1AS 6" strainer for tank lid.
- Kit 2A Seal for 6" lid.
- Kit 2CH Check valve for lid.
- Kit 4 Nylon bearing.
- Kit 5 Pump lever (fold back type).
- Kit 6 Screw & nut set.
- Kit 7 Pump handle (fold back type).
- Kit 8 Clips for pump handle.
- Kit 9 Pressure tank.
- Kit 10 O-ring for pressure tank.
- Kit 11 Retention clamp.
- Kit 12.1 O-ring and washer set for diaphragm.
- Kit 16 90° elbow.
- Kit 17 Hose set.
- Kit 18F Complete spray gun with built-in filter & grip.
- Kit 19 Spindle set.
- Kit 20 Spindle, O-ring, & washer set.
- Kit 21 Plug set (cap, spring & O-ring).
- Kit 22 20" brass spray wand.
- +Kit 23 20" plastic spray wand.
- Kit 24 Nozzle holder.
- Kit 25 Adjustable brass nozzle with holder.
- Kit 26 O-ring for spray tip.
- Kit 31 Shoulder strap clips.
- Kit 45 Piston pump holder & guide.
- Kit 46 Diaphragm, plastic piston, & internal seals.
- Kit 46V Viton diaphragm, piston, & internal seals.
- Kit 46PV Viton piston cup.
- Kit 47 Agitating hose & clamps.
- Kit 47.1 Agitating hose, clamps, & tank connector (plastic).
- Kit 49.1 Complete pump module.
- Kit 180 Small locking R-pin for pump handle.
- Kit 181 Large locking R-pin for pump handle.
- Kit 283 Shoulder strap clips.
- Kit 284 Heavy padded adjustable shoulder straps (2) with hooks.
- Kit 367 O-rings (2) for gun grip.
- Kit 392 Washer set for spray guns.
- Kit 510 Solvent resistant pressure chamber (Special).
- Kit 581 Viton diaphragm membrane.
- Kit 618 Pin for pump lever.
- Kit FILT Filter replacement for kit 18F.
- Kit GRIP Grip replacement for kit 18F.
- +Kit SPGREASE Silicone grease lubricant for all sprayers.

NOTE:  
+ Not supplied with unit, see sheet of accessories.



1618 Stanford St, Suite C, Santa Monica, CA 90404  
For spare parts and accessories, please call:  
**1-800-286-0679**

**NOTE:**  
For best results, the sprayers should be pumped every 5 seconds on a continuous basis. This will maintain your spraying pressure. If you do not pump, you will not have pressure to spray.

# The SPS0 Knapsack Sprayer

We would like to congratulate you on the purchase of your new **SPS0**, The sprayer that allows you the easiest, most comfortable way of carrying out your farm and garden projects with the revolutionary piston-diaphragm pump (Patented), that eliminates the problems inherent in most sprayers.

As a new owner of the skillfully engineered **SPS0**, we strongly recommend you carefully read and follow all the information on this sheet before use, and then, save them for future reference.

Please read the attached trouble shooting guide.

## HOW TO ASSEMBLE

1. Attach spray wand to spray gun and tighten firmly.
2. Take pump handle Kit 7 (solid) and insert into the tube on the pump lever Kit 5 ("T" shape lever on sprayer). You will notice holes drilled through both the pump handle and the pump lever. Align these holes, take the "R" pin provided and place through the holes. This affixes the handle in place and is ready for use. For storage reverse process and then place "R" pin through the pump lever Kit 5 to keep from losing "R" pin.
3. Instructions for installing shoulder strap plastic buckle:  
First put the sprayer on a hard flat surface, take the white plastic buckle and while holding the sprayer up slightly, place buckle under the tubular metal frame. Slowly push down forcing the frame into the buckle. Repeat the same procedure for other side.

## HOW TO PREPARE YOUR UNIT FOR USE

1. Remove cap.
2. Mix solution in a separate receptacle, following manufacturers directions on the tank.
3. Pour pre-mixed solution into sprayer and close the lid.
4. Place sprayer on back and pressurize tank by pumping approximately 10 to 15 times. **For best results, the sprayer should be pumped every 5 seconds on a continuous basis. This will maintain your spraying pressure. If you do not pump, you will not have pressure to spray.**
5. Always oil the seal on lid of unit as well as the check valve, this will extend the life of the seal and is important for obtaining a proper seal with no leaks.
6. A unit that has been used with herbicides should never be used to spray insecticides, unless the sprayer has been properly cleaned and neutralized of all reactive chemicals. Failure to do this could cause you to kill plants that have been sprayed. Consult with the manufacturer of the chemicals in use to obtain proper instructions.

## HOW TO CLEAN AND MAINTAIN

1. Remove lid and pour out remaining solution, then rinse all parts thoroughly with clean water.
2. Leaving approximately ½ gallon of fresh water in tank, pressurize and flush pumping systems by depressing trigger at least 2 minutes, then drain all remaining water.
3. Always store tank clean and empty in a dry, shaded location.

## CAUTIONS

Failure to follow manufacturers recommendation on use and care of unit will void any expressed or implied warranty.

Do not use chlorine or clorox. It will permanently damage pump system.

### Please read and follow all instructions before using sprayer.

- Before using, filling or cleaning any sprayer, read all parts of the operating instructions.
- Make sure to set up the sprayer exactly as explained in the printed operating instructions, reminder tags and /or stickers.
- Wear protective clothing, respirator, gloves, eye protection, etc. Whenever using, filling, or cleaning sprayer.
- Periodically re-grease lid gasket as well as lid vent and pump cylinder, where applicable.
- To ensure good performance, keep lid vent free of obstruction. Before and after each use, make sure all connections are well tightened.
- Service and replace worn parts as required.
- Read and follow all instructions of the chemical suppliers.
- As a rule, mix your chemicals in a separate container from which to fill the sprayer. Do not mix chemicals inside the sprayer. Where an exception is made (e.g. with liquid fertilizers), fill sprayer with water BEFORE adding the active ingredient.
- Always sift formula through the screen. If there is no built-in strainer, use a screened funnel.
- Never fill the sprayer with hot liquids. Max. 30°C or 85°F.
- This sprayer is made to handle agrichemicals in their usual water or oil solutions. Do not use flammable, corrosive or caustic solutions.
- Do not use chlorine, clorox, or bleach.
- Do not use acids or acidic solutions.
- Never use gasoline or other flammable materials.
- Before cleaning or servicing the sprayer, allow all pressure to escape. Do not store or transport sprayer under pressure.
- After each use, wash the sprayer--including hose, lance and shut-off valve with plenty of fresh water. Unless spraying is to be continued within hours, drain chemical formula and thoroughly rinse the tank and all liquid ducts.
- Never store chemicals in your sprayer for any length of time.
- Use the sprayer only for the kind of jobs for which it was designed. When in doubt, ask your dealer.
- Do not leave the sprayer in reach of children or persons not qualified to handle it properly.
- When not in use, and specially during prolonged storage, keep your sprayer in a protected place away from direct sun light.
- Make sure the spray hose loops freely without kinking or squeezing.
- Always use SP Systems original replacement parts.