

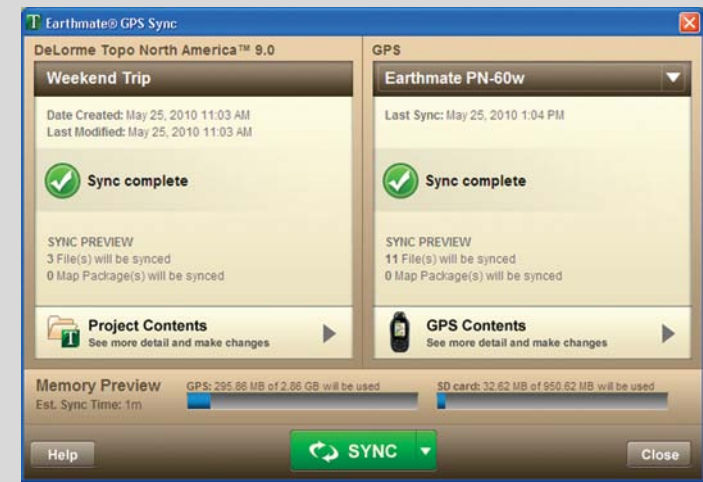
# Using DeLorme Topo North America with your PN-60

## Plan at home—explore with your PN-60

Use DeLorme Topo North America™ to plan your adventure on your computer and to sync maps, routes, and other data with your PN-60.

### Earthmate GPS Sync

Quickly and easily sync the waypoints, geocaches, tracks, routes, and maps on your PN-60 and in Topo North America.



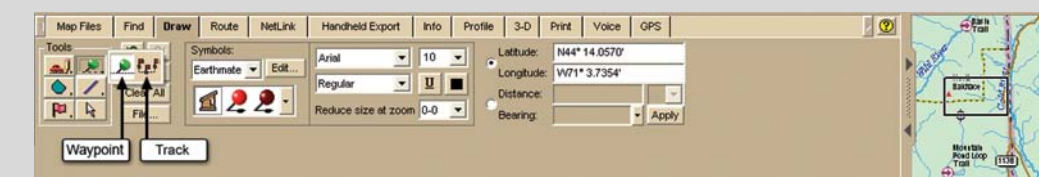
### Map Files tab—link to Geocaching.com

Work with pocket queries and upload field notes from your device.



### Draw tab—waypoints, geocaches and tracks

Create and manage points and tracks. Import and export files.



### Route tab—create routes

Create driving, biking, and hiking routes.



## Map Library Subscription

### Subscribe and SAVE!

For a low-cost annual \$29.95 subscription, get unlimited access to the online Map Library. Easily download maps to use with both DeLorme Topo North America and to layer over the topographic and street maps on your Earthmate PN-Series GPS.

To get started, click the NetLink tab in Topo North America and follow the simple on-screen instructions. Use the download certificate included with your purchase to try the Map Library—when you're ready to subscribe, purchase a subscription right from NetLink.

Many types of imagery and data are available—see the sample maps below!



Topo North America



High-Resolution imagery



USGS Canada topos



NOAA charts



MapLibrary

ANNUAL SUBSCRIPTION




DELORME

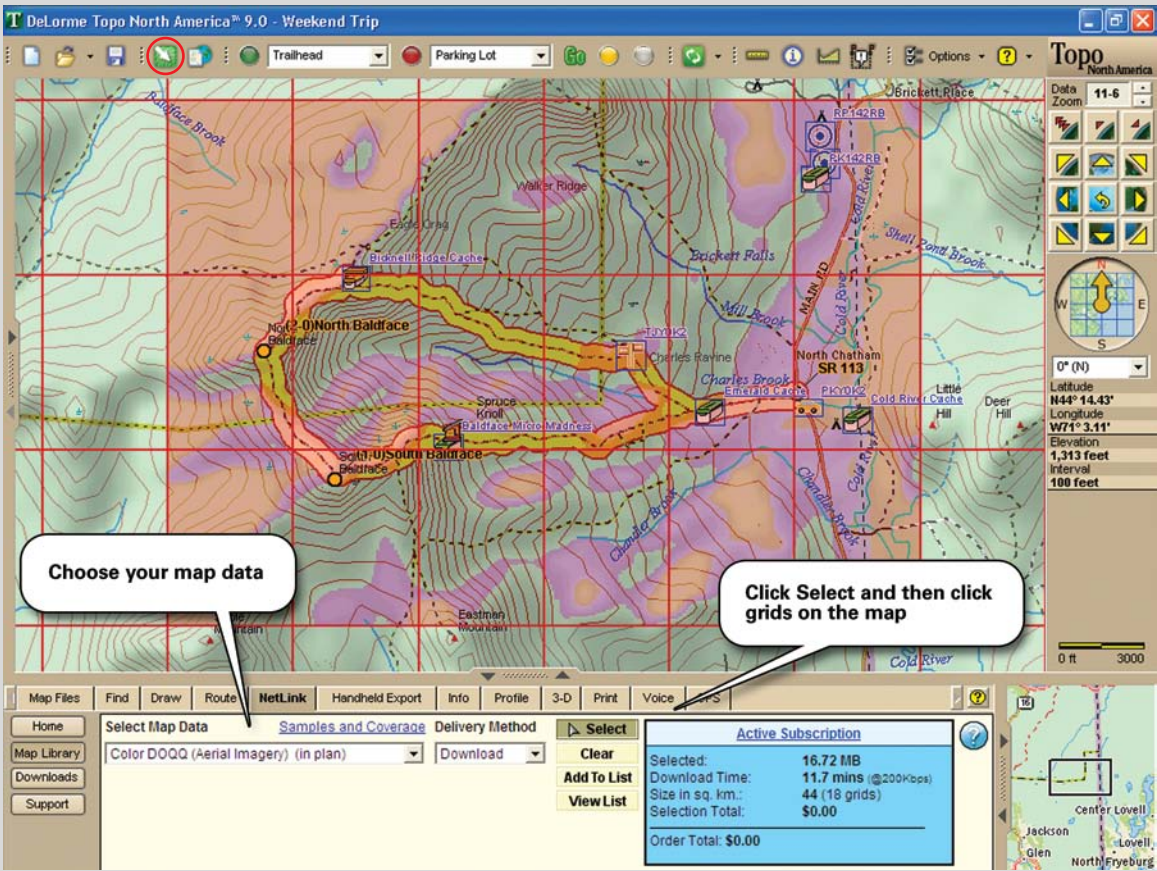
# Earthmate® PN-60

Quick Start Guide

## Add imagery and data from the Map Library

Layer additional maps and data from the Map Library over the regional GPS maps on your PN-60. For detailed help, click the blue NetLink Help button  on the NetLink > Map Library tab.

1. After using NetLink to register, enter your download certificate or Map Library validation key.
2. Choose the data type from the drop-down list. Then, click the **Select** button and click each grid on the map.



3. When finished selecting grids, click the **Submit** button. Then, name your selection and process the order. Click the **Downloads** button in NetLink to check order status.
4. Download your map to Topo North America—a map formatted for your GPS is included with your download.
5. Connect your PN-60 and click the **Sync** button on the toolbar to open Earthmate GPS Sync. Then, click **Sync** on the dialog box to copy the map to your device.





# Set Up Your PN-60

## What's in the box

- **Earthmate PN-60 GPS**
- **Quick Start Guide**
- **User Manual**
- **DeLorme Topo North America DVD**
- **Regional GPS maps on 5 DVDs**
- **USB cable**
- **2 Energizer® Ultimate Lithium AA batteries**



## Insert the batteries and SD card

Unscrew the D-rings on the battery cover and remove it. To use an SD card (not included), gently press the SD card slot latch in the battery compartment, insert the card, and press down the slot to latch it. Insert the batteries according to the polarity symbols in the battery compartment, and then replace the back cover and screw in the D-rings.



## Copy detailed topo and street maps

The Regional GPS DVDs have detailed topo and street maps from Topo North America in the correct format for your device. Insert the DVD for your region in your computer and follow the on-screen instructions to copy the maps to your PN-60. Connect the PN-60 to your computer with the USB cable and copy maps to the internal drive (to make best use of the device's memory) or an SD card inserted in the device.

*For fastest map transfer, copy the maps to an SD card using an SD card reader in your computer.*



# Take Your PN-60 Outside

1. Go outside to a place where you have a clear view of the sky.
2. Press and hold the POWER button until you see the Welcome screen.
3. Wait while the PN-60 determines your location.

It may take up to 10 minutes to obtain the initial GPS fix as the PN-60 determines its worldwide location.

## Earthmate PN-60 Buttons

**IN/OUT**—Zoom the map in or out.

**PAGE**—Move forward through pages.

**QUIT**—Cancel an action or move backward through pages.

**FIND**—Search for 4 million POIs, addresses, waypoints, and more.

**ARROW KEYPAD**—Move the cursor, pan maps, and navigate the keyboard, menus, and lists.

**MENU**—Press twice for Home Page. From any page, press once for options.

**ENTER**—Select a menu, option, or field. Get info about a place on the map.

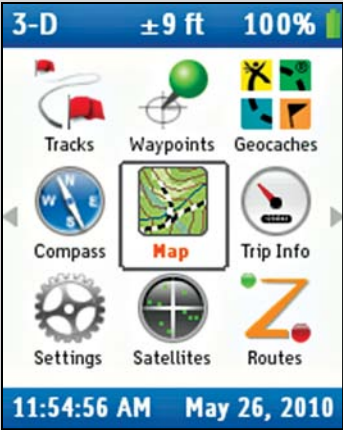
**POWER**—Press and hold to turn on or off. Press once to lock buttons or adjust backlight.

**MARK**—Mark a waypoint at your GPS location or the cursor location when panning the map.

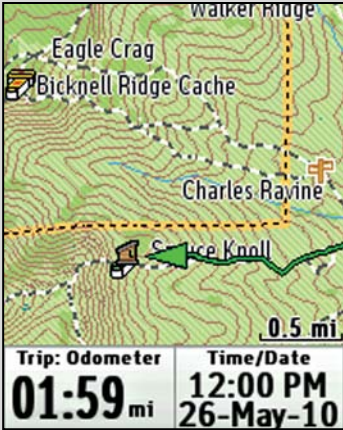
# PN-60 Pages

The pages on the PN-60 give you an easy way to get the info you need, when you need it. Start with the Home Page—see the pages to choose from as well as battery life info. To view a page, highlight its icon and then press ENTER to select it.

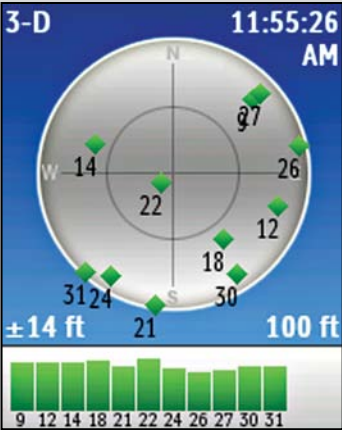
A sample of the pages on the PN-60 is shown below. See the *User Manual* for detailed info about all of the pages and how to use them.



**Home Page**—Quickly choose the page to use, switch between pages, and view battery info.



**Map Page**—View maps, imagery, and data. Track progress and follow a route.



**Satellites Page**—Check GPS signal and elevation.



**Compass Page**—Use the digital compass to determine your bearing or follow a heading.



**Trip Info Page**—View statistics as you travel—time, distance, speed, and more.



**Activities Page**—Quickly change info fields and other settings based on what you are doing.