

INSTRUCTIONS

▲ Keep this sheet for your records.



Sure Seal™ Fuel Bottle Drip Torch

No. 85026

Forestry Suppliers Sure-Seal™
Fuel Bottle Drip Torch



PRODUCT SUPPORT

800-430-5566

If you need more information or some expert advice from an experienced professional, call our Product Support team.

SALES

P 800-647-5368

F 800-543-4203

Our sales department will gladly take your order, update you on pricing, or fax an order form.

ONLINE

www.forestry-suppliers.com



205 West Rankin Street
Jackson, MS 39201



CAUTION

Backfiring equipment should be used by experienced personnel only. Precautions should be taken to prevent danger to yourself and others. ***A means of escape should always be located*** before setting fires where rapid spread may prove hazardous to yourself or others. All petroleum products should be handled with extreme caution.

Maintain torch in proper operating condition. Before use, ensure that all connections are tight. Inspect regularly and replace any damaged parts with original replacement parts only.

INSTRUCTIONS FOR USE

1. Prepare fuel mixture by adding 2 ounces of bar/chain oil to one bottle of chainsaw fuel. Other standard fuel mixtures for drip torch applications may also be used.
2. Prepare the fuel bottle drip torch for use by attaching the torch assembly to the bottle adapter. Remove any fuel that may have spilled onto the outside surface of the fuel bottle.
 - Unscrew the breather valve counterclockwise in 1/4 turn increments. Tip the fuel bottle drip torch forward slightly to allow fuel to trickle onto the igniter.
 - Light igniter. The torch is now ready to be used.

3. **To operate:** Hold the torch to your side pointing the igniter away from your body.

Gradually tilt the fuel bottle drip torch forward until the fuel pours over the igniter casting a flame along the path of travel.

4. **To extinguish:** Stand the fuel bottle drip torch upright until the igniter burns out. Allow igniter to cool before disassembling.

- Screw the breather valve clockwise to close it.
- Unscrew the torch assembly from the bottle adapter. Clean parts thoroughly after each use to prevent oil build-up.

No smoking while operating drip torch.

Explosive vapors may be released from fuel mixtures. Handle fuel mixtures accordingly.

TANK MAY CONTAIN VOLATILE VAPORS!

Do not open or fill near open flame, hot coals or sparks. Carry and store your torch with the same care you would give any fuel tank. Pay close attention to the direction of flame travel when personnel are nearby.

REPLACEMENT PARTS

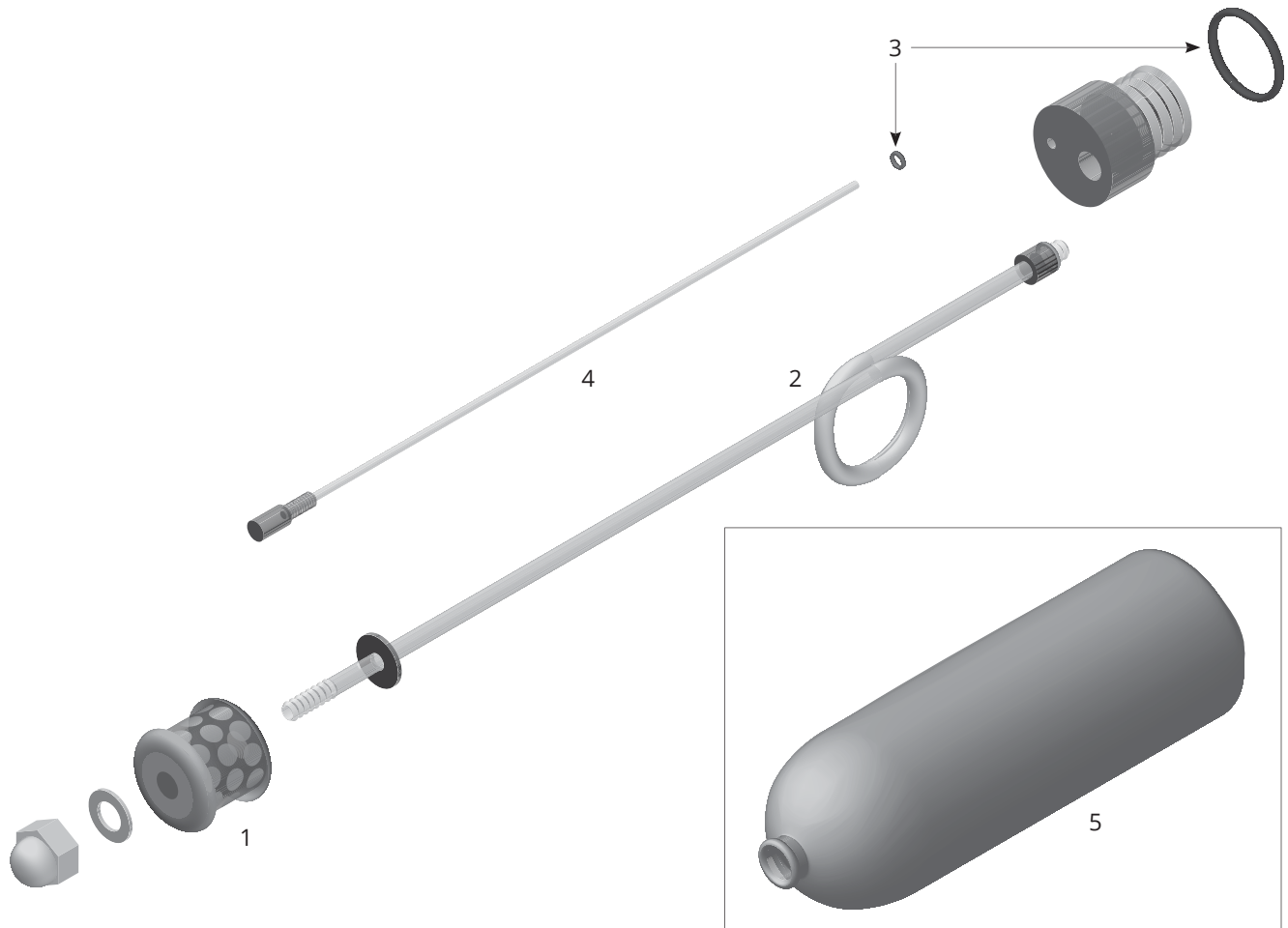


Fig.	Description	No.
1	Replacement Wick	85027
2	Replacement Spout	85028
3	Replacement O-Ring Set	85029

Fig.	Description	No.
4	Replacement Breather Valve	85031
5	33 oz. Fuel Bottle	35409